

EMPOWERING OUR COMMUNITIES

**EH!**tel

Networks Inc.



519•594•0946 info@ehtel.ca www.ehtel.ca



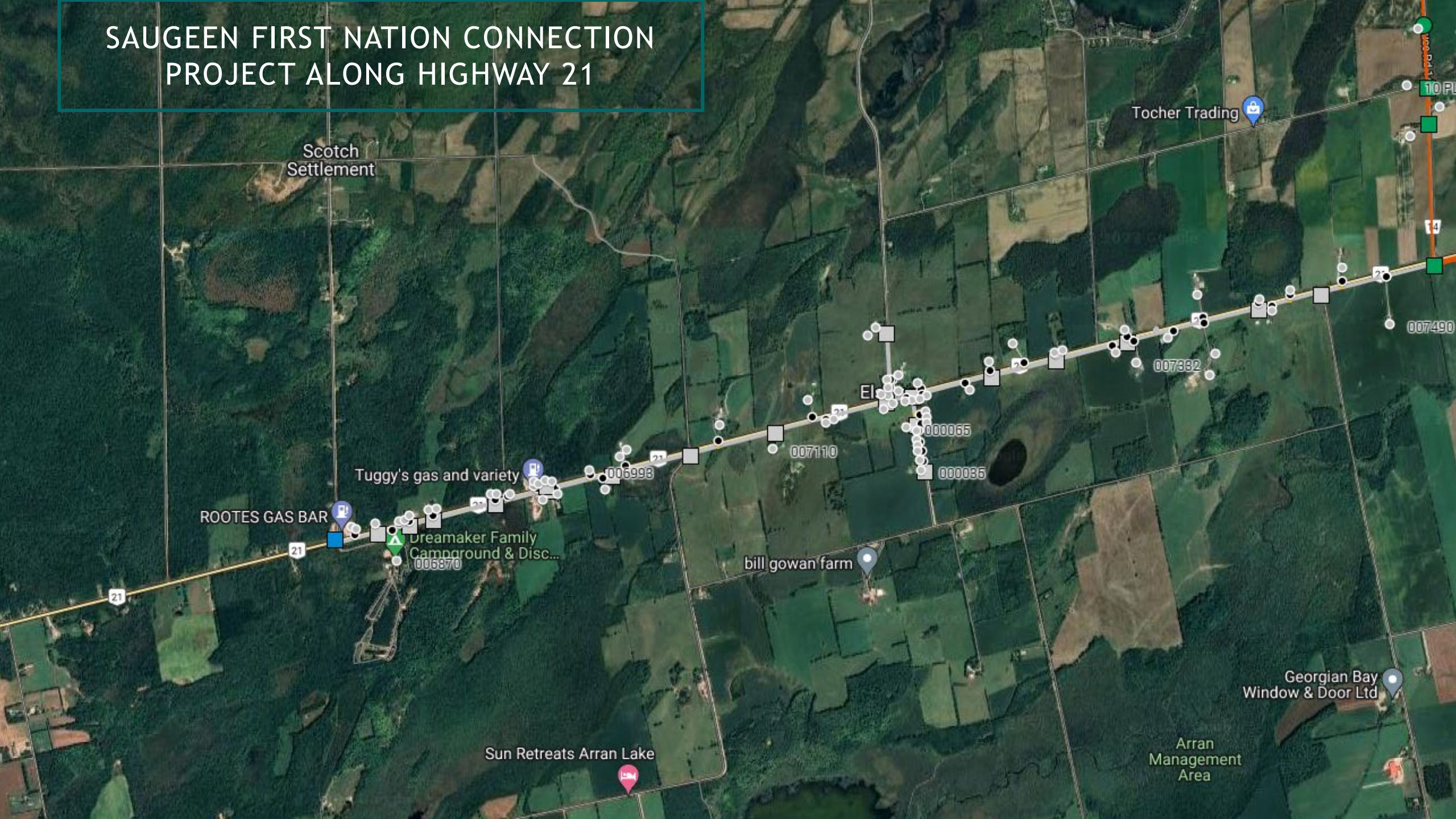
The logo for EH!tel Networks Inc features the text "EH!tel" in a bold, sans-serif font. The "E" and "H" are dark grey, the exclamation point is a small black maple leaf, and "tel" is green. To the left of the text is a green arc of dots. To the right of the logo is the text "Networks Inc" in a bold, dark grey sans-serif font.

# EH!tel Networks Inc

- **Office in Holstein**
- **Rural FTTP Solutions**
- **Committed to our Communities**
- **Incorporated in 2010**
- **Awarded \$50M Funding  
SWIFT/AHSIP**



# SAUGEEN FIRST NATION CONNECTION PROJECT ALONG HIGHWAY 21



## ARRAN-ELDESLIE VILLAGE of ELSINORE

- EH!tel is Connecting Saugeen First Nation's network with a new high capacity Fibre Line, and enabling "Fibre to the Premise" for those along Highway 21.
- EH!tel wishes to construct Fibre to the Premise to a dozen homes along Sideroad 15 North Arran in the village of Elsinore.
- AHSIP has designated this region to be funded with wireless technologies, thus future opportunity for this community to be service with fibre is unlikely.





# SERVICES

- **Unlimited Internet**
- **Managed WiFi**
- **Home Phone**
- **HD Cable TV**
- **Corporate Services**

1000  
↓

50  
↑



# SERVICE LINE INSTALLATION

- Marketing & Sales
- Signed Agreement (Permissions)
- Site Planning & Locates
- Schedule Service Line
- Schedule Service Installation

