

1: 1,000



0.1 0 0.03 0.1 Kilometers

NAD_1983_UTM_Zone_17N
© 2023 County of Bruce

This map is a user generated static output from an Internet mapping site and is for reference only. Data layers that appear on this map may or may not be accurate, current, or otherwise reliable.

THIS MAP IS NOT TO BE USED FOR NAVIGATION

Legend

- Rural Community point, labelled
- Ferry
- Provincial Highway
- County Road
- County Road
- ↔ Bridge reconstruction
- Municipal or Other Road
- Municipal or Other Road
- Bridge Detrou
- Wetland
- Body of Water
- Built-up area
- Adjacent Counties
- Lake Huron and Georgian Bay

Notes

Air Photo # 1
Bijou Theatre



Legend

- Rural Community point, labelled
- Ferry
- Provincial Highway
- County Road
- County Road
- ↔ Bridge reconstruction
- Municipal or Other Road
- Municipal or Other Road
- Bridge Detour
- Wetland
- Body of Water
- Built-up area
- Adjacent Counties
- Lake Huron and Georgian Bay

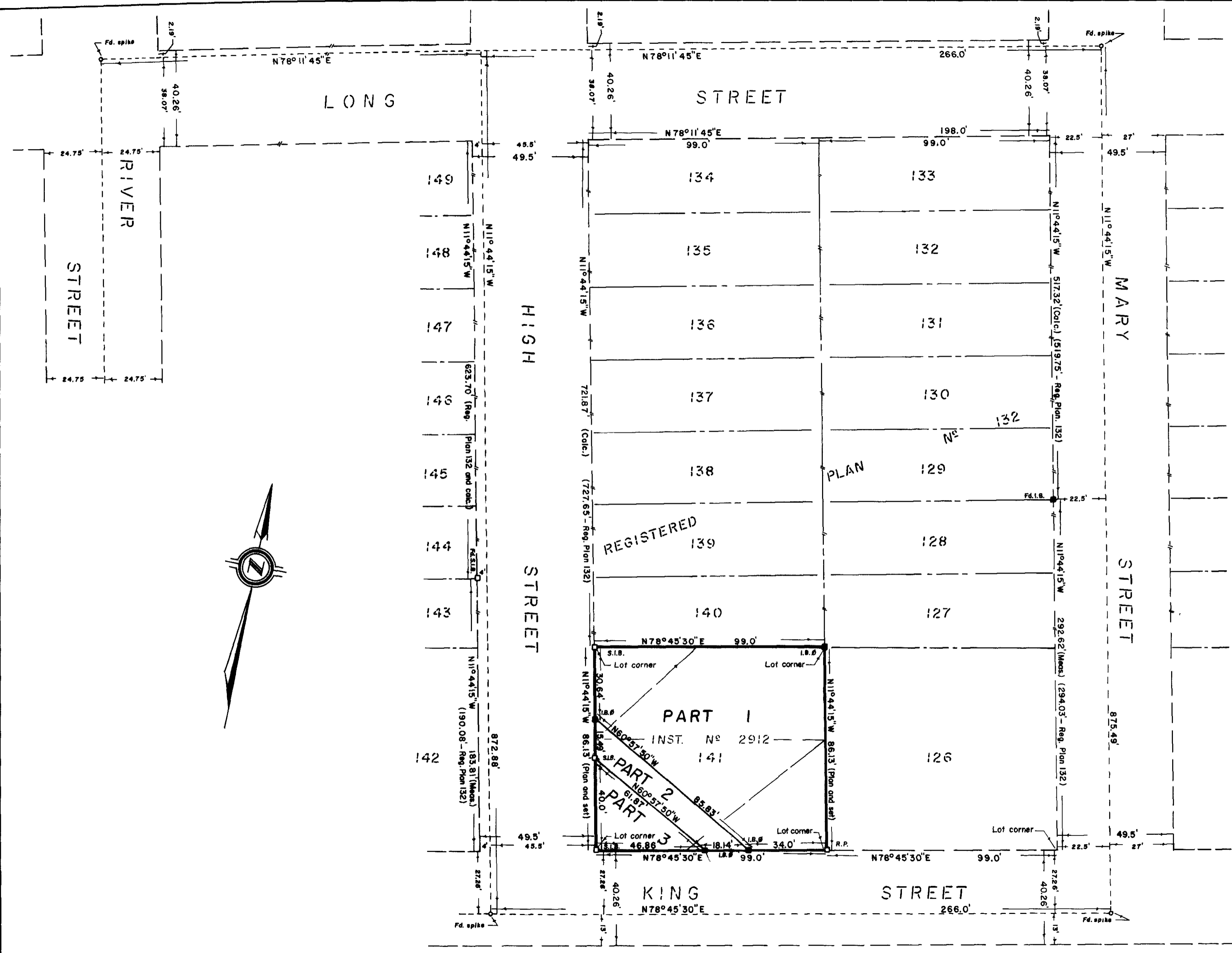
1: 1,000



0.1 0 0.03 0.1 Kilometers

Notes

Air Photo # 2
Arkwright Hall



I REQUIRE THIS PLAN TO BE DEPOSITED UNDER PART II OF THE REGISTRY ACT.
 Date JUNE 28 1976
(Signature)
GEORGE C. LOUCKS
 (Name in print)

RECEIVED AND DEPOSITED AS
PLAN 3R-1502
 Date JUNE 28, 1976
(Signature)
J. E. HINDMAN
 DEPUTY Land Registrar for the Registry Division of Bruce (No. 3).

CAUTION: - THIS PLAN IS NOT A PLAN OF SUBDIVISION WITHIN THE MEANING OF SECTIONS 29,32 or 33 OF THE PLANNING ACT.

REFERENCE PLAN
 OF LOT 141 EAST OF HIGH STREET
 REGISTERED PLAN N° 132
 TOWN OF CHESLEY
 COUNTY OF BRUCE

SCALE - 1 inch = 30 feet
 J. C. MILNE, O.L.S.
 1976

SURVEYOR'S CERTIFICATE

- I HEREBY CERTIFY THAT:
1. THIS SURVEY AND PLAN ARE CORRECT AND IN ACCORDANCE WITH THE SURVEYS ACT AND THE REGISTRY ACT AND THE REGULATIONS MADE THEREUNDER.
 2. THE SURVEY WAS COMPLETED ON THE 21st. DAY OF JUNE, 1976.

OWEN SOUND, ONTARIO,
 22nd. JUNE, 1976.

(Signature)
 J. C. MILNE, O.L.S.

HEWETT AND MILNE LIMITED
 ONTARIO LAND SURVEYORS
 BOX 112, OWEN SOUND, ONT.

NOTES:

1. ALL HANGING LINES SHOWN HEREON HAVE BEEN VERIFIED.
2. THIS PLAN CONTAINS A TRUE COPY OF THE FIELD NOTES OF THE SURVEY.
3. BEARINGS ARE ASTRONOMIC, DERIVED FROM OBSERVATION ON THE SUN, AND ARE REFERRED TO THE MERIDIAN THROUGH THE SOUTHWEST CORNER OF LOT 141 AS SHOWN HEREON.
4. --- DENOTES A TRAVERSE LINE RE-ESTABLISHED FROM FIELD NOTES OF PREVIOUS SURVEYS BY HEWETT AND MILNE LIMITED, O.L.S's.

Survey for Town of Chesley.

3R

1502

3R

1502



Legend

- Rural Community point, labelled
- Ferry
- Provincial Highway
- County Road
- County Road
- ↔ Bridge reconstruction
- Municipal or Other Road
- Municipal or Other Road
- Bridge Detrou
- Wetland
- Body of Water
- Built-up area
- Adjacent Counties
- Lake Huron and Georgian Bay

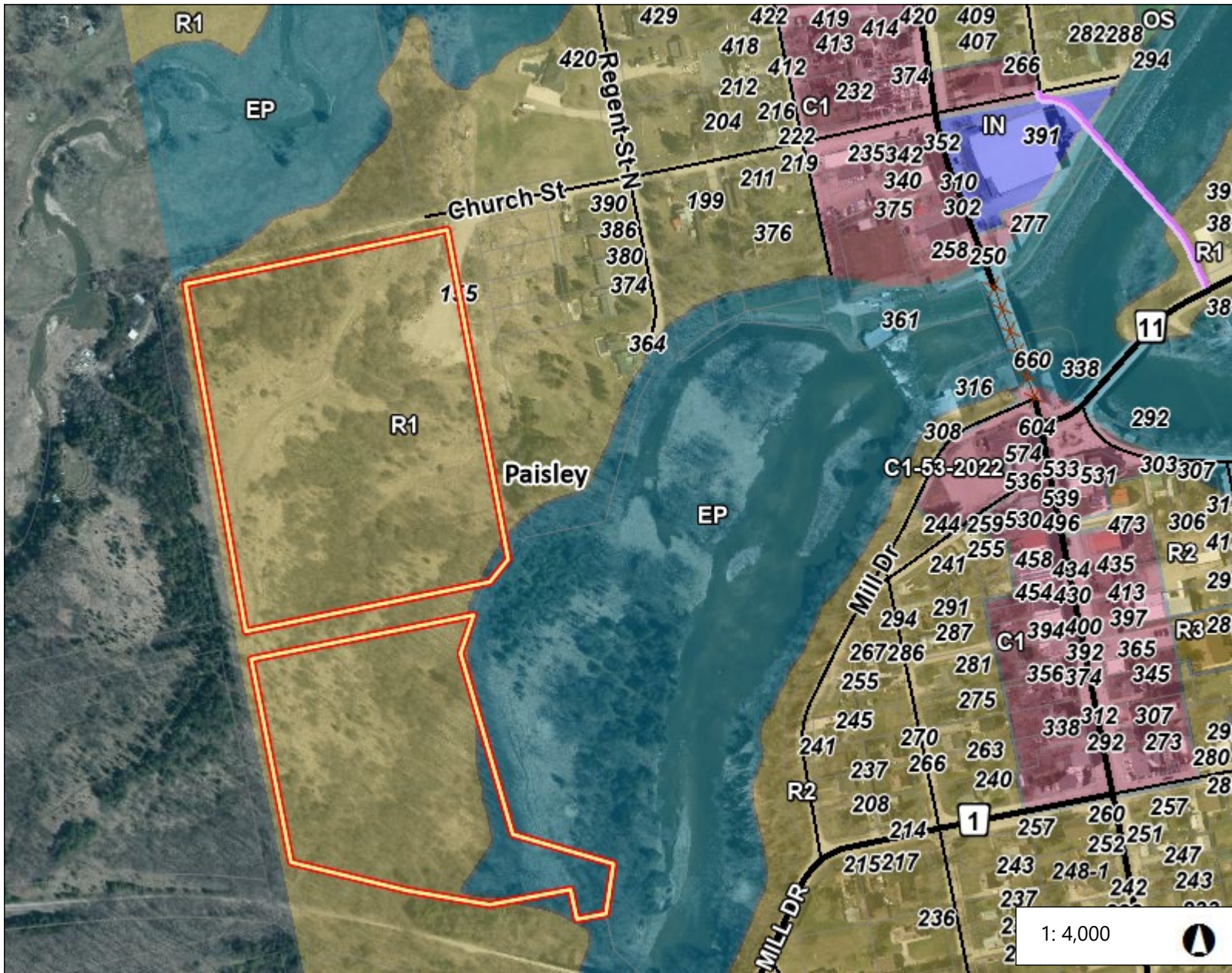
1: 1,000



0.1 0 0.03 0.1 Kilometers

Notes

Airphoto # 4
Brooke Street West Vacant Lot



Legend

- Rural Community point, labelled
 - Ferry
 - Provincial Highway
 - County Road
 - County Road
 - ↔ Bridge reconstruction
 - Municipal or Other Road
 - Municipal or Other Road
 - Bridge Detour
- Arran-Elderslie Zoning**
- EP - Environmental Protection
 - A1 - General Agriculture
 - A1-h - General Agriculture - Holding
 - HR - Hamlet Residential
 - R1 - Residential: Low Density Single
 - R1-h - Residential: Low Density Single - Holding
 - R2 - Residential: Low Density Multiple
 - R3 - Residential: Medium Density
 - R4 - Cottage Residential
 - HC - Hamlet Commercial
 - M1 - Agriculture Commercial Industrial
 - M1-h - Agriculture Commercial Industrial - Holding
 - M3 - Rural Commercial Industrial
 - TTP - Travel Trailer Park and Campground
 - C1 - Central Business District Commercial
 - C2 - Transition Commercial
 - C2-h Transition Commercial - Holding
 - C3 - Highway Commercial
 - C4 - Large Format Commercial
 - MU - Mixed Use
 - MU-h - Mixed Use - Holding
 - BP1 - Business Park 1
 - BP2 - Business Park 2
 - HI - Hamlet Industrial
 - HI-h - Hamlet Industrial - Holding
 - M2 - Extractive Industrial

Notes

Airphoto # 5
South of Church Street, Paisley

0.2 0 0.10 0.2 Kilometers

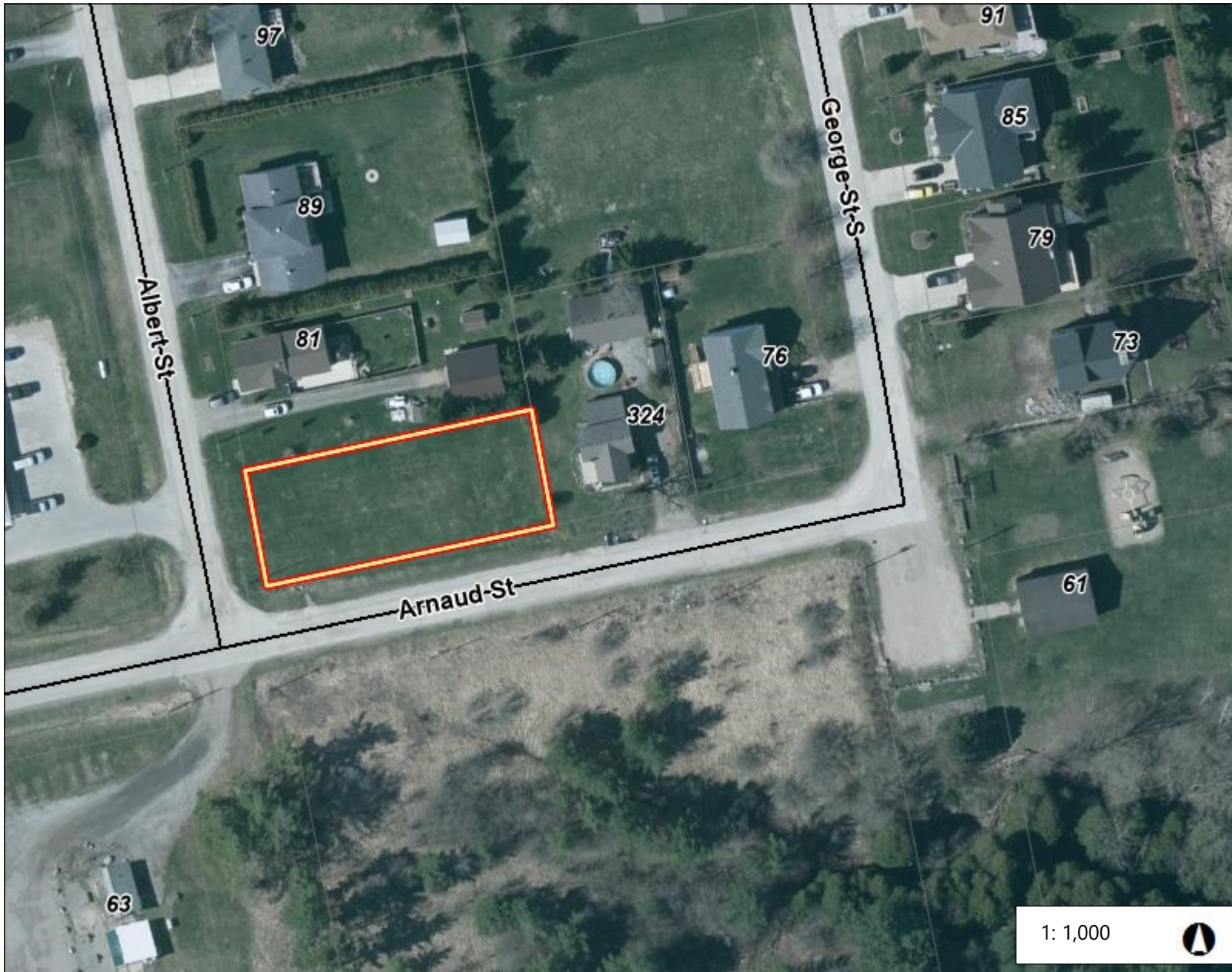
NAD_1983_UTM_Zone_17N
© 2023 County of Bruce

This map is a user generated static output from an Internet mapping site and is for reference only. Data layers that appear on this map may or may not be accurate, current, or otherwise reliable.

THIS MAP IS NOT TO BE USED FOR NAVIGATION

1: 4,000





Legend

- Rural Community point, labelled
- Ferry
- Provincial Highway
- County Road
- County Road
- ↔ Bridge reconstruction
- Municipal or Other Road
- Municipal or Other Road
- Bridge Detrou
- Wetland
- Body of Water
- Built-up area
- Adjacent Counties
- Lake Huron and Georgian Bay

1: 1,000

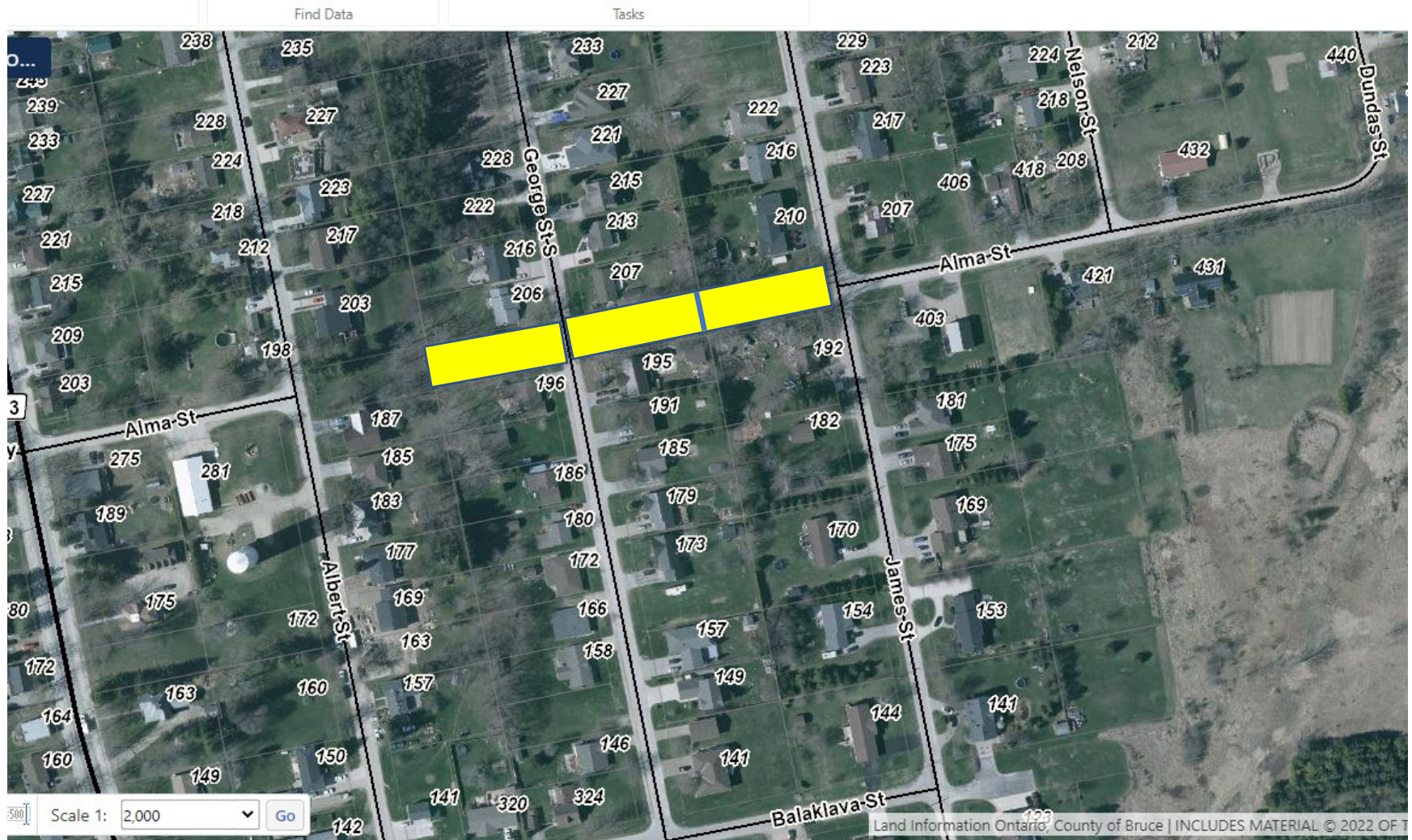


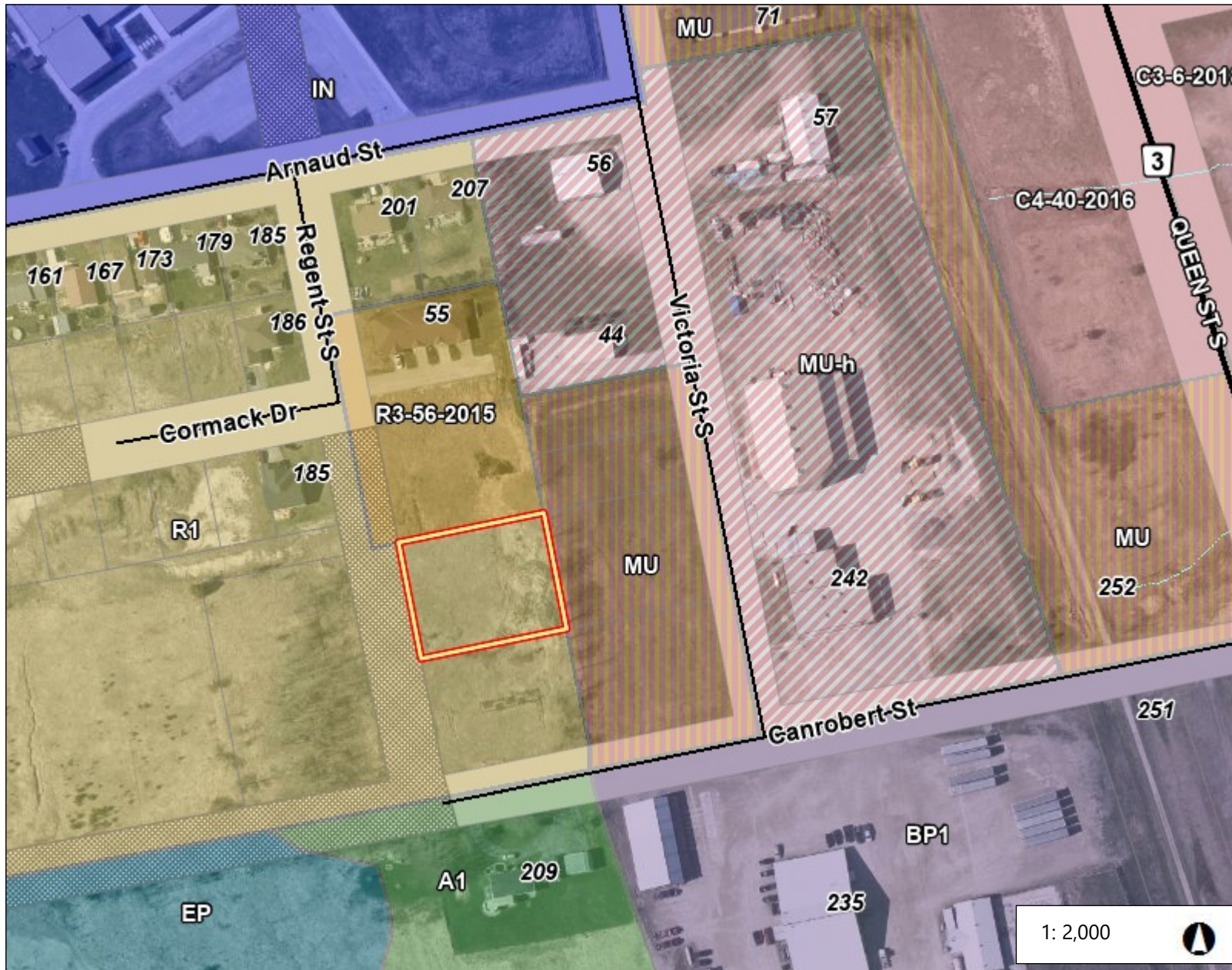
0.1 0 0.03 0.1 Kilometers

Notes

Air Photo # 6
Vacant Lot - Arnaud Street, Paisley

Air Photo # 7- Unopened Road Allowance – Alma Street, Paisley





Legend

- Rural Community point, labelled
- Ferry
- Provincial Highway
- County Road
- County Road
- ↔ Bridge reconstruction
- Municipal or Other Road
- Municipal or Other Road
- Bridge Detour
- Body of Water
- Evaluated Wetland
- Watercourse
- Permanent Stream
- Intermittent Stream
- Arran-Elderslie Zoning
- EP - Environmental Protection
- A1 - General Agriculture
- A1-h - General Agriculture - Holding
- HR - Hamlet Residential
- R1 - Residential: Low Density Single
- R1-h - Residential: Low Density Single - Holding
- R2 - Residential: Low Density Multiple
- R3 - Residential: Medium Density
- R4 - Cottage Residential
- HC - Hamlet Commercial
- M1 - Agriculture Commercial Industrial
- M1-h - Agriculture Commercial Industrial - Holding
- M3 - Rural Commercial Industrial
- TTP - Travel Trailer Park and Campground
- C1 - Central Business District Commercial
- C2 - Transition Commercial
- C2-h Transition Commercial - Holding
- C3 - Highway Commercial
- C4 - Large Format Commercial
- MU - Mixed Use

Notes

Air Photo # 8
Vacant Lot - Regent Street, Paisley

1: 2,000

