



January 21, 2025

**Re: Notice of Project Update
Detail Design for the Rehabilitation or Replacement of Cashore Creek Culvert on Highway 21, County of Bruce, Municipality of Arran-Elderslie (GWP 3021-20-00)**

To Whom it May Concern,

The Ontario Ministry of Transportation (MTO) has retained Egis to carry out the Detail Design for the rehabilitation or replacement of the Cashore Creek Culvert on Highway 21 in the County of Bruce, Municipality of Arran-Elderslie. A key map showing the culvert (Site 02X-0480/C0) location is attached.

Work may also include, but not be limited to, pavement rehabilitation and drainage improvements. The rehabilitation and/or replacement works will be staged to ensure one (1) lane of traffic is maintained and will be controlled with temporary traffic signals. Signage will also be placed in advance notifying motorists.

Construction is anticipated to commence in 2026, subject to funding and approvals.

The project is exempt from the requirements of the *Class Environmental Assessment (Class EA) for Provincial Transportation Facilities and Municipal Expressways (2024)* and the *Environmental Assessment Act* in accordance with the provisions of Section 15.3 (1) and (2). Exemption from the Class EA does not exempt the Project Team from fulfilling the requirements of other legislation (e.g., obtaining permits and authorizations), directives, policy and protocols, and mitigating potential negative environmental impacts as appropriate. The Project Team will conduct project-specific consultation and undertake environmental investigations, including but not limited to natural sciences investigations, Stage 1-2 archaeological assessment, and designated substance surveys.

We encourage you to contact one of the following MTO or Egis project team members if you have any comments or questions regarding this project:

Laura Donaldson, P.Eng.
Project Manager
Egis
516 O'Connor Drive
Kingston, ON K7P 1N3
Tel: 343-344-2635 or
Email: Laura.Donaldson@egis-group.com

Theo Abiola, P. Eng
MTO Project Engineer
MTO Project Delivery West
659 Exeter Road
London, ON N6E 1L3
Tel: 226-577-6836
Email: Theo.Abiola@ontario.ca

We would appreciate receiving any comments or questions you may by **February 20, 2025**.



All information/comments received will be maintained on file for use during the study and may be included in the study documentation. With the exception of personal information, all comments will become part of the public record in accordance with the *Freedom of Information and Protection of Privacy Act*. If you have accessibility requirements in order to participate in this project, please contact one of the Project Team members listed above.

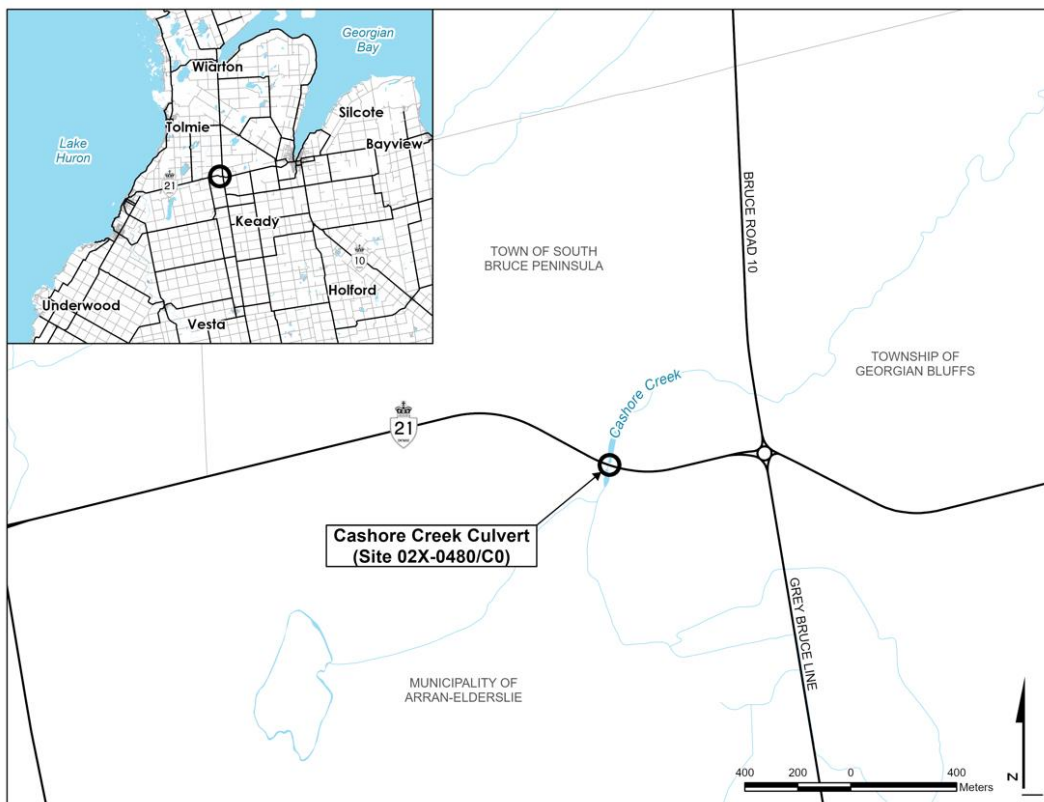
Sincerely,



Laura Donaldson, P.Eng.
Project Manager, Egis

Encl. Key Map

- cc. Theo Abiola, MTO Project Manager
- Lora Yurdakul, MTO Environmental Planner
- Jennifer Cavanagh, Egis Environmental Planner



Key Map