



Tara BESS Project Update Arran-Elderslie Council

May 26, 2025

Project Background

- Tara BESS, formerly Grey Owl Storage, is a 400-megawatt (MW), 1600 MW hours (MWh) battery energy storage system proposed for development on 39 Concession Road 4, in the Municipality of Arran-Elderslie.
- The project was awarded a 20-year energy storage contract by Ontario's Independent Electricity System Operator (IESO) in May 2024, through the IESO's competitive long-term 1 (LT1) RFP procurement.
- Tara BESS is one of 10 energy storage projects awarded a contract in LT1, collectively totaling 1,784 MW, to help meet Ontario's growing energy needs.
- The contract is for a standalone battery only and does not include a provision to expand the BESS or add another renewable technology, such as solar.
- Neon acquired the project from Shift Solar Inc., in late 2024, and is now exclusively leading development of the project.
- At the end of the contract, Neoen must decommission Tara BESS within 18-months of the last day of operations.

Project Development Timeline



Public Consultation

- Post-award consultation for Tara BESS began in September 2024, and has included:
 - Canvassing and landowner meetings
 - Open houses
 - January 21, 2025
 - June 5, 2025
 - Rightsholder consultation
 - Council delegations
 - Multi-stakeholder working group
 - Project website and feedback form
 - Project mail-outs
 - Site visits
- Neoen accepts feedback via:
 - Phone: (416) 312-0057
 - Email: info@tarabattery.ca
 - Web: www.tarabattery.ca
 - Mail: 319-150 King Street West, Toronto, ON M5H 1J9
 - In-person



What we've heard and how we've responded

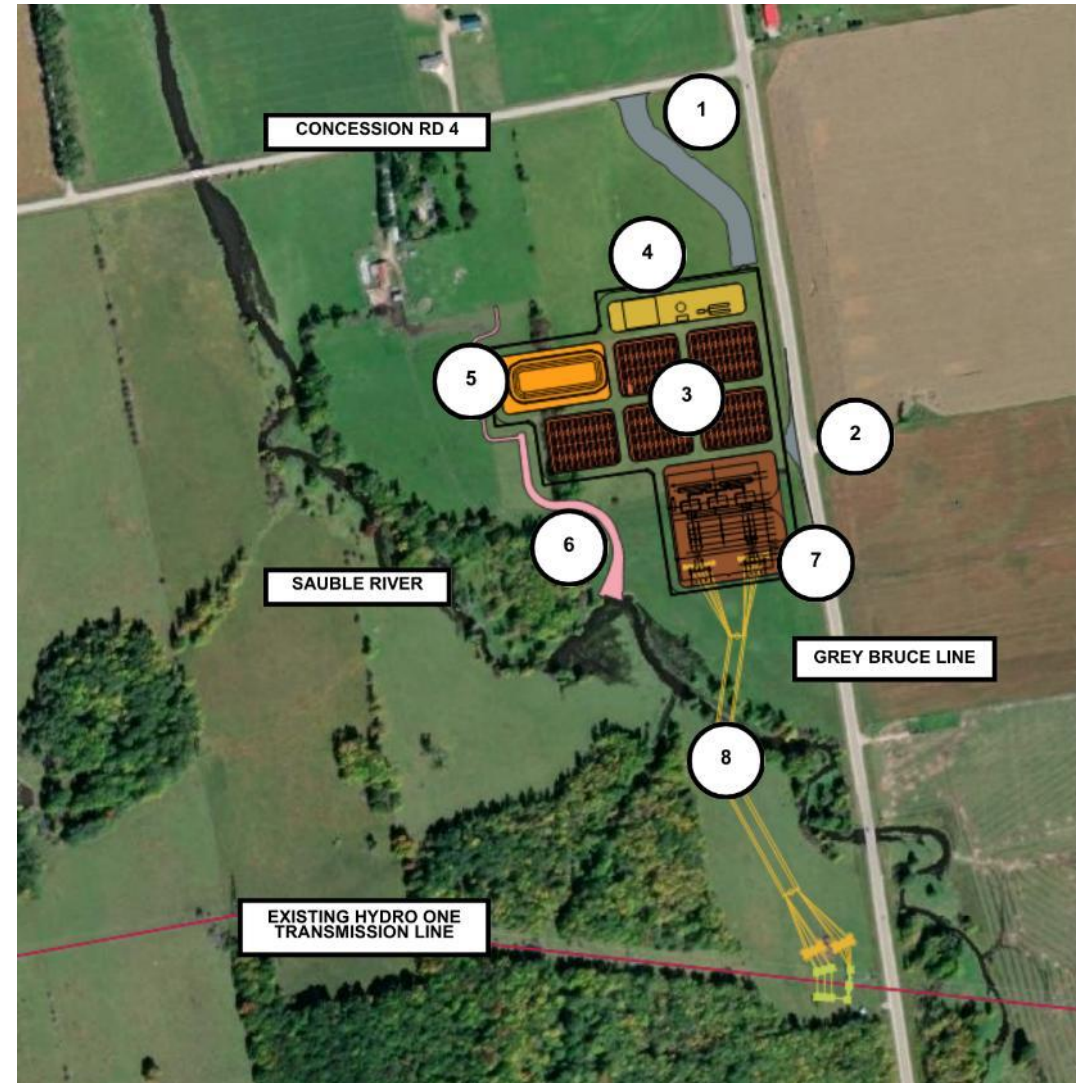
1. Concerns about loss of agricultural land.
2. Concerns about developing on a floodplain/EP lands.
3. Concerns about proximity to Sauble River.
4. Concerns about visual impact.
5. Concerns about risk of fire.

Proposed Project Location and Layout

1. **Primary Entrance** off Concession Rd 4
2. **Secondary Entrance** off Grey Bruce Line
3. **5 Clusters of Battery Containers** with acoustic barrier walls (420 containers total)
4. **Operations & Maintenance Buildings**
5. **Stormwater Management Pond**
6. **Vegetated Swale** (drainage)
7. **230-kilovolt (kV) Substation** with 3 high-voltage transformers (2 active, 1 back-up) and switching equipment
8. **~500 meters of 230 kV Transmission Line and Structures**

Total project footprint: ~22 acres.

216 trees and shrubs are proposed for the north and east perimeters of the site. The facility will be enclosed by fencing.



Grey Sauble Conservation Authority Approval

- Tara BESS is proposed for lands with a designated floodplain and is subject to approval by Grey Sauble Conservation Authority.
- A cut-and-fill method, combined with a surface run-off management system and retention pond, is proposed to mitigate impact to the floodplain:
 - The **cut-and-fill method** will raise the facility so that water can flow freely around it, while stormwater ditches leading to the Sauble River will off-set the BESS footprint.
 - A **surface run-off management system** comprised of site grading, vegetated ditches, subsurface storm sewers and drainage directed to the retention pond.
 - A **retention pond** (also referred to as wet pond) complete with separator, discharge orifices, and a control valve that allows water to flow into the Sauble River and limits flows to less than pre-BESS development flow rates.
- The proposed design protects water quality, quantity, and provides erosion control.
- No impact to floodplain or stormwater when modeled against 100-year return events.

Class Environmental Assessment

- Tara BESS is subject to the Ministry of Environment, Conservation and Parks' (MECP) **Class Environmental Assessment for Minor Transmission Facilities** (Class EA) process, in accordance with the Ontario Environmental Assessment Act.
- Notice of Commencement of the Class EA process for Tara BESS was initiated on November 25, 2024.
- Feedback received between Notice of Commencement and Notice of Completion will be entered into a public consultation record that will form part of Neoen's Class EA submission.
- Notice of Completion expected to be issued in **spring 2025**, followed by a 30-day public comment period.

Required studies:

- Aquatic Habitat Assessment
- Ecological Land Classification and Vegetation Surveys
- Breeding Bird Surveys
- Breeding Amphibian Surveys
- Bat Habitat Assessment (Maternity Roost Surveys)
- Noise Impact Assessment
- Agricultural Impact Assessment

Status of Permit and Approval Requirements

- Grey Sauble Conservation Authority Approval – **application deemed complete April 25, 2025**
- Official Plan Amendment and Re-zoning (Bruce County/Arran Elderslie) – **application deemed complete May 8, 2025**
- Class EA for Transmission Facilities – **underway**
- Environmental Compliance Approval for Stormwater
- Environmental Activity Sector Registration (noise)
- Archaeology Clearance
- Approved Soil and Excess Materials Management Plan
- Ontario Endangered Species Act Sec.17 Permit (if applicable)
- Arran-Elderslie BESS Policy (Site Plan) Application

Local Project Benefits

- Tara BESS will deliver an estimated **\$134,000 in municipal tax revenues annually**.
- **100K Community Benefits Fund** to support local initiatives, commencing at operations and refreshed annually through the final year of operations.
- **50K in benefit sharing for residential neighbours** annually, commencing at construction.
- Rightsholder benefits.
- 200+ jobs at peak construction, plus supplier opportunities.
- Art installation.

